

# 2023-2024 School Year District Calendar



*Connect, Inspire, Empower*



@OrtingSchoolDistrict



## Dear Students, Families, Staff and Community Partners

Welcome back to a brand new school year filled with endless possibilities, growth, and success! I hope this letter finds you all in good health and high spirits. As the superintendent of the Orting School District, it is my honor and privilege to welcome you back to another school year.

We are excited to present the first wall calendar to our families. In this calendar will you find a breakdown of our Strategic Plan and some important information for the school year. We hope the calendar serves a warm welcome to incoming and returning families.

As we move forward, our focus remains on providing a top-notch education that prepares our students for success in an ever-changing world. We are committed to fostering a learning environment that promotes critical thinking, creativity, collaboration, and a love for lifelong learning. Our dedicated teachers and staff have been working diligently to enhance our curriculum, implement innovative teaching strategies, and integrate technology to support personalized learning experiences.

As we embark on this new academic year, let us embrace the opportunities it brings, celebrate our achievements, and support one another through the challenges we may face. Together, we will create an environment where every student can thrive, dream big, and achieve their fullest potential.



Once again, welcome back to the 2023-2024 school year! May this school year be filled with excitement, growth, and boundless opportunities for each and every one of you. I look forward to witnessing your accomplishments and celebrating your successes.

In service,

A handwritten signature of Ed Hatzenbeler in black ink.

Ed Hatzenbeler  
Superintendent

## OSD Board of Directors

### Representing You

The Orting School District Board of Directors consists of five directors, elected by residents to govern the school district. The board works with the superintendent and district administration to make decisions regarding bond and levy elections, budget adoptions, facilities, curriculum adoptions, fiscal planning and oversight, employee relations, transportation, and more. They establish district policies according to federal, state and local laws; the State Board of Education; and the State Superintendent of Public Instruction.

While the board is ultimately responsible for setting policy, it employs a professional staff of administrators to implement policies and manage day-to-day functions in the district. The staff is led by the superintendent, who carries out the board's vision and direction.



Michael Melot  
District 1



JoAnn Tracy  
District 2



Carrie Thibodeaux  
District 3



Kathy Madigan  
District 4



Melissa Kinzler  
District 5

# 2023-2024 School Year At-A-Glance

## Important Dates

<b>SEPTEMBER</b>	<ul style="list-style-type: none"> <li>4- Labor Day</li> <li>5- First Day of School for Grades 1-12</li> <li>8- First Day of School for Kindergarten</li> </ul>
<b>OCTOBER</b>	<ul style="list-style-type: none"> <li>17-18- K-5 Only Parent/Teacher Conferences (1/2 Days)</li> <li>19-20- K-12 Parent/Teacher Conferences (1/2 Days)</li> </ul>
<b>NOVEMBER</b>	<ul style="list-style-type: none"> <li>10- Veteran's Day (No School)</li> <li>22-23- Thanksgiving (No School)</li> <li>24- Native American Heritage Day (No School)</li> </ul>
<b>DECEMBER</b>	<ul style="list-style-type: none"> <li>21-29- Winter Break (No School)</li> </ul>
<b>JANUARY</b>	<ul style="list-style-type: none"> <li>2-3- Winter Break (No School)</li> </ul>

<b>FEBRUARY</b>	<ul style="list-style-type: none"> <li>15- MLK Day (No School)</li> <li>29- No School</li> <li>16- Snow Make Up Day</li> <li>19- Presidents' Day (No School)</li> <li>20- Staff Enrichment Day (No School)</li> </ul>
<b>APRIL</b>	<ul style="list-style-type: none"> <li>2-3- K-5 Only Parent/Teacher Conferences (1/2 Days)</li> <li>4-5- K-12 Parent/Teacher Conferences (1/2 Days)</li> <li>8-12- Spring Break (No School)</li> </ul>
<b>MAY</b>	<ul style="list-style-type: none"> <li>24- Snow Make Up Day</li> <li>27- Memorial Day (No School)</li> </ul>
<b>JUNE</b>	<ul style="list-style-type: none"> <li>18- Last Day of School (1/2 Day)</li> <li>19- Juneteenth</li> </ul>

## Connect with us!

<b>District Office</b>	(360) 893-6500
<b>Orting Elementary School</b>	(360) 893-2248
<b>Ptarmigan Ridge Elementary</b>	(360) 893-0595
<b>Orting Middle School</b>	(360) 893-3565
<b>Orting High School</b>	(360) 893-2246
<b>Nutritional Services</b>	(360) 872-4397
<b>Transportation</b>	(360) 893-2302



@OrtingSchoolDistrict

## School Start/Dismissal Times

	<b>START</b>	<b>DISMISSAL (M-Th)</b>	<b>DISMISSAL (FRIDAY)</b>	<b>DISMISSAL (HALF-DAY)</b>
Orting Elementary School	8:50 a.m.	3:20 p.m.	1:50 p.m.	11:45 a.m.
Ptarmigan Ridge Elementary	9:00 a.m.	3:30 p.m.	2:00 p.m.	11:55 a.m.
Orting Middle School	7:55 a.m.	2:25 p.m.	12:55 p.m.	10:25 a.m.
Orting High School	7:45 a.m.	2:15 p.m.	12:45 p.m.	10:15 a.m.

Visit [www.OrtingSchools.org](http://www.OrtingSchools.org) for our most current calendar event dates and information. Dates are subject to change.



*Laina*  
*Orting Elementary School*

## **DIVERSE VOICES, UNIFIED DIRECTION**

The strategic plan was developed over several months in collaboration with our community, staff, students and families to capture their vision, hopes and dreams of what local public education should look like.

---

## **MISSION**

In strong partnership with our families and community members, Orting School District will engage and develop the unique interests and talents of every learner as they apply their education in creative and inventive ways. Through high expectations and relevant opportunities to learn and grow in a caring, supportive environment, we will ensure each of our children feels connected, inspired, and empowered to create a better present and future!

# ***September*** 2023



Notes: \_\_\_\_\_

\_\_\_\_\_

\_\_\_\_\_

\_\_\_\_\_

\_\_\_\_\_

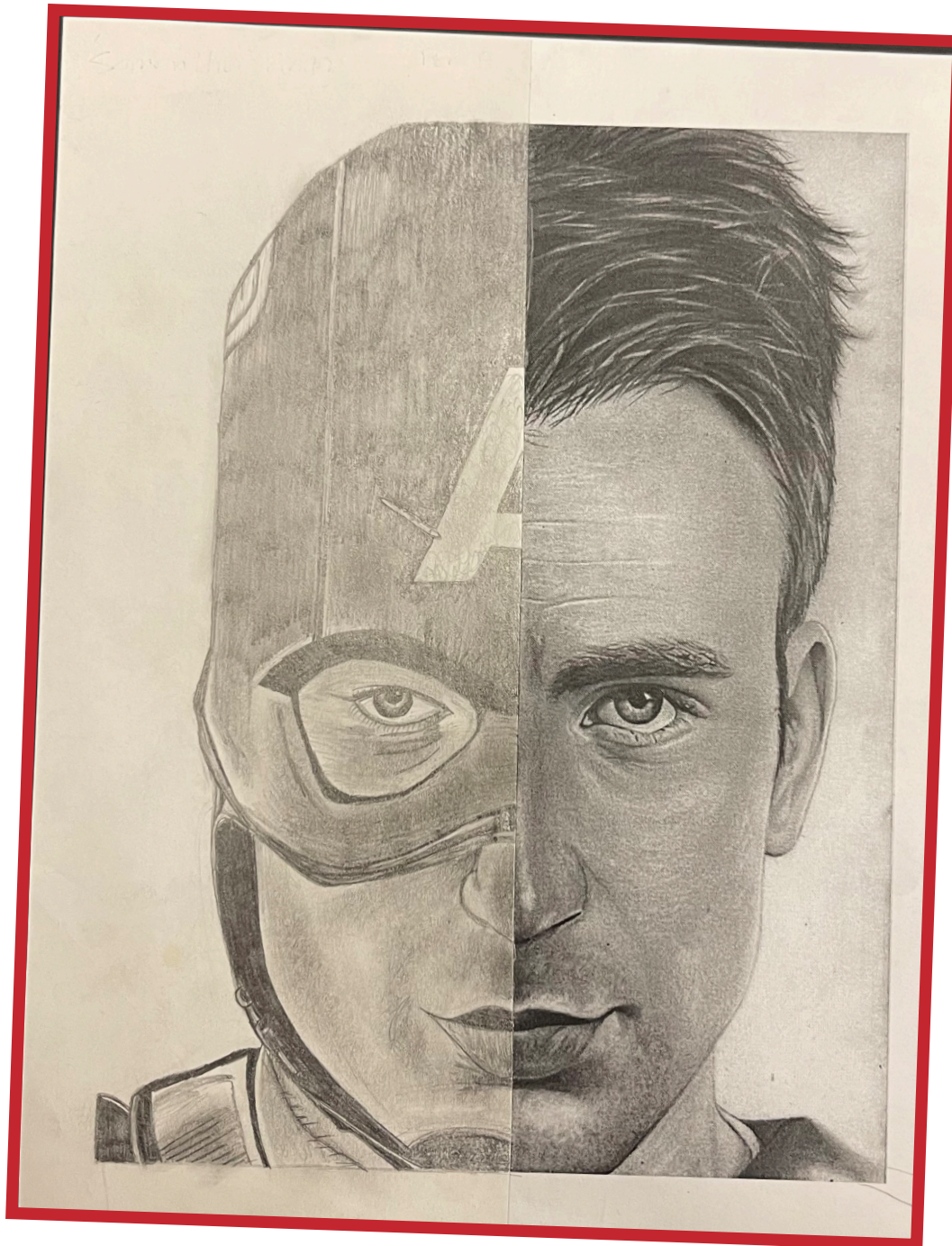


AUGUST							OCTOBER						
S	M	T	W	T	F	S	S	M	T	W	T	F	S
		1	2	3	4	5	1	2	3	4	5	6	7
6	7	8	9	10	11	12	8	9	10	11	12	13	14
13	14	15	16	17	18	19	15	16	17	18	19	20	21
20	21	22	23	24	25	26	22	23	24	25	26	27	28
27	28	29	30	31			29	30	31				

SUNDAY	MONDAY	TUESDAY	WEDNESDAY	THURSDAY	FRIDAY	SATURDAY
					1	2
3	4  <b>LABOR DAY</b>	5  KINDERGARTEN FAMILY CONNECTION MEETINGS  <b>SCHOOL STARTS GRADES 1-12</b>	6  KINDERGARTEN FAMILY CONNECTION MEETINGS	7  KINDERGARTEN FAMILY CONNECTION MEETINGS	8  KINDERGARTEN STARTS yabuk'wətdat ʔə ti sčədadx <sup>w</sup> - Fishing Wars Recognition Day	9
10  Arts in Education Week  Suicide Prevention Week	11	12	13	14	15          Rosh Hashanah (begins)	16
17       Rosh Hashanah (ends)	18	19	20	21	22	23       First Day of Autumn
24       Yom Kuppur (begins)	25       Yom Kuppur (ends)	26	27	28	29	30

**Connect, Inspire, Empower**

All Fridays (unless otherwise stated) are early release days for staff PD.  
Visit our website ([ortingschools.org](http://ortingschools.org)) to see start and dismissal times.



Samanta  
Orting High School

# VISION

In an environment of high expectations with high levels of support, we desire to have each student:

- Make personal meaning through creation, exploration and invention.
- Engage in meaningful, relevant learning, leading to deeper understanding.
- Believe their success makes a difference and their goals matter.
- Connect through meaningful relationships where they are heard, known, seen and loved by others.

## PARTNER WITH US FOR HEALTHY SCHOOLS

You can help prevent the spread of illness by keeping a sick child at home. A temperature of 100.4F (38C) or higher suggests infectious illness. Your child should be fever-free for 24 hours without medicine before returning to school. Diarrhea and/or vomiting, red eyes or eye drainage, or a rash with fever may also indicate infectious illness. Please contact your medical provider and keep your student home until they have received clearance to return to school.

**October** 2023



Notes: \_\_\_\_\_

\_\_\_\_\_

\_\_\_\_\_

\_\_\_\_\_

\_\_\_\_\_



SEPTEMBER							NOVEMBER						
S	M	T	W	T	F	S	S	M	T	W	T	F	S
					1	2				1	2	3	4
3	4	5	6	7	8	9	5	6	7	8	9	10	11
10	11	12	13	14	15	16	12	13	14	15	16	17	18
17	18	19	20	21	22	23	19	20	21	22	23	24	25
24	25	26	27	28	29	30	26	27	28	29	30		

SUNDAY	MONDAY	TUESDAY	WEDNESDAY	THURSDAY	FRIDAY	SATURDAY
1	2 National Grounds and Custodian Appreciation Day	3	4	5	6 German- American Heritage Day	7
8	9 School Lunch Week	10	11	12	13	14
15	16 School Bus Safety Week	17 K-5 ONLY Parent/ Teacher Conferences (1/2 Day)	18 K-5 ONLY Parent/ Teacher Conferences (1/2 Day)	19 K-12 Parent/Teacher Conferences (1/2 Day)	20 K-12 Parent/Teacher Conferences (1/2 Day)	21
22	23	24 Navratri/ Dussehra	25	26	27	28
29	30	31 Halloween				

**Connect, Inspire, Empower**

All Fridays (unless otherwise stated) are early release days for staff PD.  
Visit our website ([ortingschools.org](http://ortingschools.org)) to see start and dismissal times.



# CORE VALUES

- We foster high expectations, continuous growth and high achievement.
- We understand and cultivate the unique needs and interests of learners through relationships and personalization.
- We embrace a culture of creativity, exploration and innovation to sustain our growth and improvement.
- We commit to removing barriers to learning to ensure our schools are inclusive and equitable.
- We believe ongoing communication, collaboration and community engagement are essential.

---

## LANGUAGE ACCESS

If you need information in another language, or you would like to request interpretation services for a school-related event, please contact your child's school. Front office professionals have been trained to assist you. Over the phone interpretation services are available anytime through Language Line. We respectfully request two weeks notice for in-person and ASL interpretation services.

**November**  
2023



Notes: \_\_\_\_\_

\_\_\_\_\_

\_\_\_\_\_

\_\_\_\_\_

\_\_\_\_\_



OCTOBER							DECEMBER						
S	M	T	W	T	F	S	S	M	T	W	T	F	S
1	2	3	4	5	6	7							1 2
8	9	10	11	12	13	14	3	4	5	6	7	8	9
15	16	17	18	19	20	21	10	11	12	13	14	15	16
22	23	24	25	26	27	28	17	18	19	20	21	22	23
29	30	31					24/31	25	26	27	28	29	30

SUNDAY	MONDAY	TUESDAY	WEDNESDAY	THURSDAY	FRIDAY	SATURDAY
			1  Día de los Muertos - Day of the Dead	2	3	4
5  Daylight Savings	6	7  Election Day	8	9	10  VETERAN'S DAY NO SCHOOL	11  VETERAN'S DAY
12  Diwali	13	14	15  Education Support Professionals Day	16	17	18
19	20	21	22  NO SCHOOL	23  THANKSGIVING BREAK NO SCHOOL	24  NATIVE AMERICAN HERITAGE DAY NO SCHOOL	25  Potlatch Days k'wədidətdat (Day of Thankfulness)
26  Potlatch Days k'wədidətdat (Day of Thankfulness)	27	28	29	30		

**Connect, Inspire, Empower**

All Fridays (unless otherwise stated) are early release days for staff PD.  
Visit our website ([ortingschools.org](http://ortingschools.org)) to see start and dismissal times.

# GOALS: *Academic Growth*

Ensuring academic growth through high expectations, rigor, essential standards, agency, and dignity as the drivers for academic success for each learner.

Jayden  
Orting Middle School

## MEASURE

### *Quantitative Measure:*

- Students meeting grade level benchmarks
- Growth of targeted subgroups of students
- Proficiency on state testing
- Interim assessments

### *Qualitative Measure:*

- Instructional walk-through observations
- Teacher and team student growth data
- Portfolios (assigned tasks, student work samples, artifacts)
- Staff and student surveys with agency and dignity focus



# December



Notes: \_\_\_\_\_

\_\_\_\_\_

\_\_\_\_\_

\_\_\_\_\_

\_\_\_\_\_



NOVEMBER							JANUARY						
S	M	T	W	T	F	S	S	M	T	W	T	F	S
			1	2	3	4		1	2	3	4	5	6
5	6	7	8	9	10	11	7	8	9	10	11	12	13
12	13	14	15	16	17	18	14	15	16	17	18	19	20
19	20	21	22	23	24	25	21	22	23	24	25	26	27
26	27	28	29	30			28	29	30	31			

SUNDAY	MONDAY	TUESDAY	WEDNESDAY	THURSDAY	FRIDAY	SATURDAY
					1	2 Special Education Day
3	4 Computer Science Education Week	5	6	7 Hanukkah (begins)	8	9
10	11	12	13	14	15 Hanukkah (ends)	16
17	18	19	20	21 First Day of Winter WINTER BREAK NO SCHOOL	22 WINTER BREAK NO SCHOOL	23
24 31	25 Christmas WINTER BREAK NO SCHOOL	26 Kwanzaa (begins) sləx̌il ʔə tə ʃx̌ˈnanəm tliiti - Medicine Creek Treaty Day WINTER BREAK NO SCHOOL	27 WINTER BREAK NO SCHOOL	28 WINTER BREAK NO SCHOOL	29 WINTER BREAK NO SCHOOL	30

**Connect, Inspire, Empower**

All Fridays (unless otherwise stated) are early release days for staff PD.  
Visit our website ([ortingschools.org](http://ortingschools.org)) to see start and dismissal times.



Harper  
Orting Elementary School

## GOALS: *Community Partnership and Connection*

Forging and fostering meaningful, collaborative relationships with families and our community to support and empower students with a sense of agency and dignity.

---

## MEASURE

### *Quantitative Measures:*

- Students and families accessing community partnership resources
- Parents perception survey
- Students accessing dual credit

### *Qualitative Measure:*

- Parents and community involvement and participation
- Parent and community surveys and focus groups to increase involvement and remove barriers
- Opportunities for parents to support and/or provide feedback for learning/instruction

# *January* 2024



Notes: \_\_\_\_\_

\_\_\_\_\_

\_\_\_\_\_

\_\_\_\_\_

\_\_\_\_\_



DECEMBER							FEBRUARY							
S	M	T	W	T	F	S	S	M	T	W	T	F	S	
					1	2						1	2	3
3	4	5	6	7	8	9	4	5	6	7	8	9	10	
10	11	12	13	14	15	16	11	12	13	14	15	16	17	
17	18	19	20	21	22	23	18	19	20	21	22	23	24	
24/31	25	26	27	28	29	30	25	26	27	28	29			

SUNDAY	MONDAY	TUESDAY	WEDNESDAY	THURSDAY	FRIDAY	SATURDAY
	1 <b>Kwanzaa (ends)</b> <b>NEW YEARS DAY</b> <b>WINTER BREAK</b> <b>NO SCHOOL</b>	2  <b>WINTER BREAK</b> <b>NO SCHOOL</b>	3  <b>WINTER BREAK</b> <b>NO SCHOOL</b>	4	5	6
7	8	9	10	11	12	13
14	15  <b>MLK DAY</b> <b>NO SCHOOL</b>	16	17	18	19	20
21	22	23	24	25	26	27
28	29  <b>NO SCHOOL</b>	30	31			

**Connect, Inspire, Empower**

All Fridays (unless otherwise stated) are early release days for staff PD.  
Visit our website ([ortingschools.org](http://ortingschools.org)) to see start and dismissal times.

# GOALS: Whole Child

Cultivating social-emotional skills for students to self-advocate and self-regulate in navigating challenges and forming meaningful connections, through an environment that develops and honors their agency and dignity and that of others.

## MEASURE

### Quantitative Measure:

- Student and staff social emotional learning data
- Readiness for key transitions (K, 3, 6, 9 and post high school)
- On-time graduation and regular attendance

### Qualitative Measures:

- Student planned and led initiatives and events
- Second Step and Character Strong student feedback
- Portfolio (Incorporation of student voice, student feedback and targeted professional development)

# February 2024

Having carried a paper clip and a screw eye in their hand constantly for about a week, the students were asked to "write a drawing" about their experience. As in many other instances this student's writing/drawing took the form of the objects, which in poetic terms is called a "calligram." Pen and ink "written" drawing by Karen Berman.

WE CAN ONLY LEARN TO LOVE BY LOVING.  
-Iris Murdoch

8.8 (Opposite page) Yves Tanguy (French, 1900–1955), Letter to Paul Eluard, 1933. Pen and ink and paper, 11 1/2" x 7 1/4" (27 x 19 cm). The Museum of Modern Art Library, New York; Eluard and Dausse Collection.

In 1923 Tanguy saw a picture by the Italian metaphysical painter Giorgio de Chirico and instantly decided to take up painting. He associated himself with the Surrealists and produced paintings of dreamlike, enigmatic landscapes with rocks that cast long shadows. Many of the Surrealists produced picture-poems where they were preoccupied with the use of words in images as well as images in words. William Rubin tells us that "Tanguy's picture-letter . . . is another type of invention based on the fusion of words and images. The control requires that we imagine a perspective drawing of a letter folded into the morphological patterns of Tanguy's paintings; some words disappear or are broken off by the projections of the biomorphic 'hill town,' and 'birds' in the form of punctuation marks by around the margins." (Dada, Surrealism, and Their Heritage, New York: New York Graphic Society and The Museum of Modern Art, 1978, p. 94.) Why don't you try to invent a totally new word by incorporating words into visual images or vice versa?

both abstract drawings as well as figurative works, each of which is composed of dozens of these stencils put together to create "humanoid" figures. No doubt about it: in the hands of artists, pre-existing shapes can become powerful forces for the release of creative/expressive energy.

The problem here is to find a pre-existing shape you can either trace or, when dipped in ink, use as a stamp to create a vigorous and imaginative work. It is possible to use "Fragile" or "Do Not Bend" stamps, which are readily available, but remember that other more unusual objects can also be used as a stamp, such as a pair of scissors, a fork, or, as Chuck Close did (Figure 5.1), your own fingerprint. Objects such as forks or scissors can be both traced and used as a stamp!

### Writing a Drawing—Calligrams

A calligram is any kind of writing that suggests or physically illustrates the subject being written about. My own discovery of the calligram was quite by accident. A favorite assignment of mine for several years was to pass out a couple of small objects to my class, such as two thumbtacks, or a couple of paper clips and a screw eye. I gave them instructions to carry them in their hands constantly for a period of one week. Set them down on your night table just before you turn out the light at night and in the morning they should be the first things you reach for. You might give them names and I sug-

gest that you show them to as many people as possible. I told the class, Yes, they were baffled, but the majority (perhaps to humor me!) did carry out the instructions.

The next week, upon returning to class, my instructions were: "I'd like to have you settle down for two hours and, without any talking whatever, I'd like you to 'write' a drawing." Write a drawing?

They were dumbfounded, but proceeded as best they could—and the results were quite remarkable from both a literary and an artistic viewpoint. (See drawing by Karen Berman.) The aspect which most astounded me, however, was that a high percentage, in writing about their experiences, did so in such a manner as to create what I only later learned were called calligrams. In 1913–1916 French poet and art critic, Guillaume Apollinaire, wrote an entire volume of calligrams: a poem about a necktie took on that shape, a poem about time took on the shape of a pocket watch, and so forth, forth.

It is indeed possible to "write a drawing" without creating a calligram, and many of my students, as well as important artists, have done so. (Note the drawings by Yves Tanguy (Figure 8.8) and Christian Dotremont (Figure 8.9.) Writing a drawing is a good challenge and something of a mind-bender for you. Write a drawing about some important or inane experience of your own.

MAKENNA  
EAGAN  
23 MAR. 1st



Notes: \_\_\_\_\_

\_\_\_\_\_

\_\_\_\_\_

\_\_\_\_\_

\_\_\_\_\_



JANUARY							MARCH						
S	M	T	W	T	F	S	S	M	T	W	T	F	S
	1	2	3	4	5	6							1 2
7	8	9	10	11	12	13	3	4	5	6	7	8	9
14	15	16	17	18	19	20	10	11	12	13	14	15	16
21	22	23	24	25	26	27	17	18	19	20	21	22	23
28	29	30	31				24/31	25	26	27	28	29	30

SUNDAY	MONDAY	TUESDAY	WEDNESDAY	THURSDAY	FRIDAY	SATURDAY
				1	2	3
4	5 School Counseling Week	6	7	8	9	10 Lunar New Year
11	12	13	14 Valentine's Day Ash Wednesday	15	16 SNOW MAKE-UP DAY NO SCHOOL	17
18	19 PRESIDENTS' DAY NO SCHOOL	20 STAFF ENRICHMENT DAY NO SCHOOL	21	22	23 School Bus Driver Appreciation Day	24
25	26	27	28	29		

**Connect, Inspire, Empower**

All Fridays (unless otherwise stated) are early release days for staff PD.  
Visit our website ([ortingschools.org](http://ortingschools.org)) to see start and dismissal times.



Chris  
Orting High School

# GOALS: *Student Support Systems*

Ensuring each student has equitable access to systems that leverage the power of our collective expertise to support strong core instruction developing agency, ensuring dignity, and achieving individual academic growth.

## MEASURE

### *Quantitative Measure:*

- Disproportionality in exclusion data
- Intervention growth data
- Universal screening data

### *Qualitative Measures:*

- Reducing risk factors and increasing protective factors
- Students setting, persevering and reaching their goals and aspirations
- Student voice and feedback on needs assessment and initiatives

*March* 2024



Notes: \_\_\_\_\_

\_\_\_\_\_

\_\_\_\_\_

\_\_\_\_\_

\_\_\_\_\_



FEBRUARY							APRIL						
S	M	T	W	T	F	S	S	M	T	W	T	F	S
				1	2	3		1	2	3	4	5	6
4	5	6	7	8	9	10	7	8	9	10	11	12	13
11	12	13	14	15	16	17	14	15	16	17	18	19	20
18	19	20	21	22	23	24	21	22	23	24	25	26	27
25	26	27	28	29			28	29	30				

SUNDAY	MONDAY	TUESDAY	WEDNESDAY	THURSDAY	FRIDAY	SATURDAY
					1	2
3	4	5	6	7	8	9
10 Daylight Savings	11 Education Support Professionals Week Ramadan ( <i>begins</i> )	12	13	14	15	16
17 St. Patrick's Day	18	19 First Day of Spring	20 Nowruz (Persian New Year)	21 Nowruz (Persian New Year)	22	23
24 31 Easter	25	26	27	28	29 Good Friday	30

**Connect, Inspire, Empower**

All Fridays (unless otherwise stated) are early release days for staff PD.  
Visit our website ([ortingschools.org](http://ortingschools.org)) to see start and dismissal times.



*Cheyenne  
Ptarmigan Ridge Elementary*

**Orting School District's Strategic Plan is a reaffirmation of our community's long-standing commitment to all students.**

## **ENSURING IMPLEMENTATION**

Orting School District has set this strategic plan with student outcomes at the forefront of our thinking and students' achievements as the measure of success. We believe these goals work in conjunction to ensure each student has their individual needs met and can thrive in our schools.

What is important are the conversations at the dinner table, in the park, or with loved ones. We hope each student feels like they belong here, are challenged in relevant and interesting coursework, and are heard, seen, loved, and supported. We want our students to truly believe the adults care about them and their success. As they dream about their future goals, we want to be partners in crafting, coaching, guiding, and facilitating amazing learning experiences as we build future success.

**April** 2024

Notes: \_\_\_\_\_

\_\_\_\_\_

\_\_\_\_\_

\_\_\_\_\_

\_\_\_\_\_



MARCH							MAY						
S	M	T	W	T	F	S	S	M	T	W	T	F	S
					1	2				1	2	3	4
3	4	5	6	7	8	9	5	6	7	8	9	10	11
10	11	12	13	14	15	16	12	13	14	15	16	17	18
17	18	19	20	21	22	23	19	20	21	22	23	24	25
24/31	25	26	27	28	29	30	26	27	28	29	30	31	

SUNDAY	MONDAY	TUESDAY	WEDNESDAY	THURSDAY	FRIDAY	SATURDAY
	1	2 K-5 ONLY Parent/ Teacher Conferences (1/2 Day)	3 K-5 ONLY Parent/ Teacher Conferences (1/2 Day)	4 K-12 Parent/Teacher Conferences (1/2 Day)	5 K-12 Parent/Teacher Conferences (1/2 Day)	6
7  School Library Week	8  SPRING BREAK NO SCHOOL	9  SPRING BREAK NO SCHOOL	10  Eid al-Fitr ( <i>end of Ramadan</i> ) SPRING BREAK NO SCHOOL	11  SPRING BREAK NO SCHOOL	12  SPRING BREAK NO SCHOOL	13
14	15	16	17	18	19	20
21	22  Public School Volunteer Week Passover ( <i>begins</i> )	23	24  Administrative Professionals Day	25	26	27
28	29	30  Passover ( <i>ends</i> )				

**Connect, Inspire, Empower**

All Fridays (unless otherwise stated) are early release days for staff PD.  
Visit our website ([ortingschools.org](http://ortingschools.org)) to see start and dismissal times.





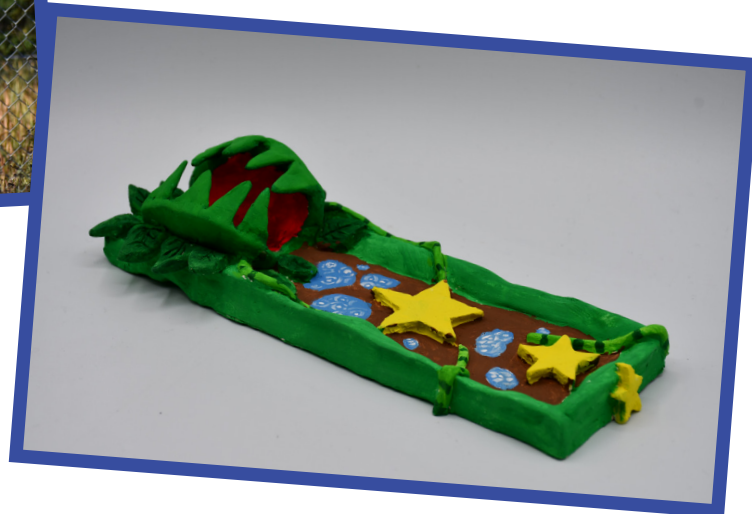
*Bailey  
Orting Middle School*

## PUBLICATIONS AND STUDENT PHOTOGRAPHS

There are times when photographs of students may be taken for district and school websites, social media applications and printed/electronic publications or other district use. If you do not want your child to appear in photographs or videos, please complete the photo opt-out form when you enroll your child in Skyward.

## ParentSquare

Our district uses the ParentSquare automated system as a tool for communication with our parents, students, families and staff. ParentSquare works with the district's student-data system (Skyward/Family Access) to notify families and staff through phone and/or email of emergencies, inclement weather situations, attendance issues, and other events/activities. The overall goal of using this service is to notify families to receive important information in a timely manner.



*Miles  
Orting Middle School*

**May** 2024

Notes: \_\_\_\_\_

\_\_\_\_\_

\_\_\_\_\_

\_\_\_\_\_

\_\_\_\_\_



APRIL							JUNE						
S	M	T	W	T	F	S	S	M	T	W	T	F	S
	1	2	3	4	5	6							1
7	8	9	10	11	12	13	2	3	4	5	6	7	8
14	15	16	17	18	19	20	9	10	11	12	13	14	15
21	22	23	24	25	26	27	16	17	18	19	20	21	22
28	29	30					23/30	24	25	26	27	28	29

SUNDAY	MONDAY	TUESDAY	WEDNESDAY	THURSDAY	FRIDAY	SATURDAY
			1	2	3 School Lunch Hero Day	4
5	6 Teacher Appreciation Week	7	8 School Nurse Day	9	10	11
12 Mother's Day	13	14	15	16	17	18
19	20	21	22	23	24 SNOW MAKE- UP DAY NO SCHOOL	25
26	27 MEMORIAL DAY NO SCHOOL	28	29	30	31	

**Connect, Inspire, Empower**

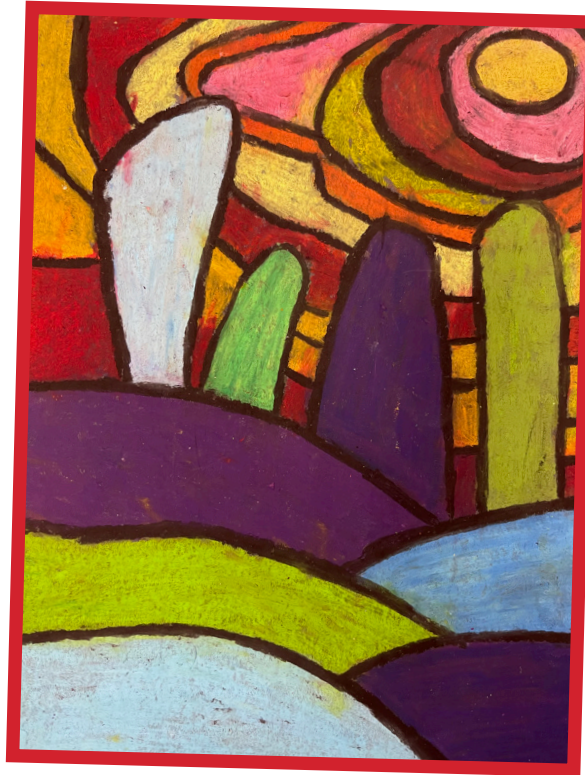
All Fridays (unless otherwise stated) are early release days for staff PD.  
Visit our website ([ortingschools.org](http://ortingschools.org)) to see start and dismissal times.



# FIRST EVER SCHOOL BOARD ART AWARD WINNERS



Rian  
Orting High School



Felix  
Ptarmigan Ridge Elementary

In an effort to support our students' artistic talents, we have introduced the School Board Art Award. Our 5 school board members looked at art submitted from our 4 schools - Orting Elementary School, Ptarmigan Ridge Elementary, Orting Middle School, and Orting High School. Two pieces were selected to represent our elementary side and secondary side. Throughout this calendar, submissions for the School Board Art Award were represented. Our 2023 winners hang in our central office. We look forward to seeing the art our students create this year!

---

## HAVE YOU CHANGED PHONE NUMBERS?

Please remember to check and update (as necessary) your contact information with your child's school or on Skyward/ Family Access. This is important in case we need to reach you in the event of an illness, injury or school emergency.

*June* 2024



Notes: \_\_\_\_\_

\_\_\_\_\_

\_\_\_\_\_

\_\_\_\_\_

\_\_\_\_\_



MAY							JULY						
S	M	T	W	T	F	S	S	M	T	W	T	F	S
			1	2	3	4		1	2	3	4	5	6
5	6	7	8	9	10	11	7	8	9	10	11	12	13
12	13	14	15	16	17	18	14	15	16	17	18	19	20
19	20	21	22	23	24	25	21	22	23	24	25	26	27
26	27	28	29	30	31		28	29	30	31			

SUNDAY	MONDAY	TUESDAY	WEDNESDAY	THURSDAY	FRIDAY	SATURDAY
						1
2	3	4	5	6	7	8
9	10	11	12	13	14	15
16 Father's Day	17 Eid al-Adha	18 LAST DAY OF SCHOOL!	19 JUNETEENTH	20 First Day of Summer	21	22
23 30	24	25	26	27	28	29

**Connect, Inspire, Empower**

All Fridays (unless otherwise stated) are early release days for staff PD.  
Visit our website ([ortingschools.org](http://ortingschools.org)) to see start and dismissal times.

# July 2024



JUNE							AUGUST						
S	M	T	W	T	F	S	S	M	T	W	T	F	S
						1					1	2	3
2	3	4	5	6	7	8	4	5	6	7	8	9	10
9	10	11	12	13	14	15	11	12	13	14	15	16	17
16	17	18	19	20	21	22	18	19	20	21	22	23	24
23/30	24	25	26	27	28	29	25	26	27	28	29	30	31

SUNDAY	MONDAY	TUESDAY	WEDNESDAY	THURSDAY	FRIDAY	SATURDAY
	1	2	3	4 INDEPENDENCE DAY	5	6
7	8	9	10	11	12	13
14	15	16	17	18	19	20
21	22	23	24	25	26	27
28	29	30	31			

# 2024

## August



JULY							SEPTEMBER						
S	M	T	W	T	F	S	S	M	T	W	T	F	S
	1	2	3	4	5	6	1	2	3	4	5	6	7
7	8	9	10	11	12	13	8	9	10	11	12	13	14
14	15	16	17	18	19	20	15	16	17	18	19	20	21
21	22	23	24	25	26	27	22	23	24	25	26	27	28
28	29	30	31				29	30					

SUNDAY	MONDAY	TUESDAY	WEDNESDAY	THURSDAY	FRIDAY	SATURDAY
				1	2	3
4	5	6	7	8	9	10
11	12	13	14	15	16	17
18	19	20	21	22	23	24
25	26	27	28	29	30	31



# Inclement weather / late start

In the event of inclement weather/late start, all schools will start two hours late and dismiss at their regular times unless otherwise announced. The decision to close schools or delay school due to inclement weather or bad road conditions is made by the superintendent as early as possible, usually around 6:30 a.m. The district will announce the decision to close in a variety of ways to help parents get the information quickly and accurately. These include:

- A popup on the district's website home page (**[OrtingSchools.org](http://OrtingSchools.org)**)
- A post on the district's Facebook page (**[facebook.com/OrtingSchools](https://facebook.com/OrtingSchools)**)
- A post on the district's Instagram page (**[Instagram.com/OrtingSchoolDistrict](https://Instagram.com/OrtingSchoolDistrict)**)
- A recorded phone message, email and text sent to guardians from ParentSquare.
- An updated post on **[www.flashalert.net](http://www.flashalert.net)**, accessible to public and monitored by regional media.

**IMPORTANT NOTE:** Please contact the main office at your child's school to ensure the school has your most current contact information so you will receive the district's recorded messages and emails.

# Bus routes

Our Transportation Department is responsible for developing student's bus routes and schedules. For the most up-to-date information on bus schedules and routes:

- Visit our district website at **[OrtingSchools.org/Transportation](http://OrtingSchools.org/Transportation)**
- Call (360) 893-2302

Posted bus routes and pick-up and drop-off times are approximate. Please remember that traffic, weather and other unforeseen circumstances may cause routes to be early or delayed. It is recommended that parents and students arrive at their bus stops at least five minutes prior to the published times.

# School bus safety

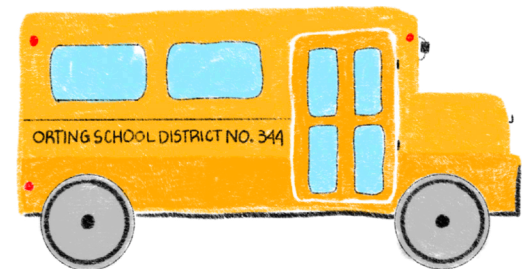
Families and schools share the responsibility for providing a safe environment for students while they are riding district buses and during times of emergency school closures. Please encourage your student(s) to be cooperative in observing bus rules.

Students need to arrive at their bus stops five minutes prior to the published time. Students on buses are expected to follow behavior rules corresponding to classroom conduct regulations. They must

sit properly in their seats, keep their hands to themselves, refrain from throwing objects, be courteous to others, and obey the bus driver at all times.

# Safety and security

We believe every student deserves a safe and caring learning environment. Along with having a School Resource Officer, conducting monthly drills, staff professional development, social emotional learning, we also utilize SafeSchools Alert Tip Reporting System which allows you to quickly, easily, and anonymously report safety concerns to school officials 24/7/365. Visit our website to learn more: **[OrtingSchools.org/Safety](http://OrtingSchools.org/Safety)**



# Lahar drill

Due to Orting's location between the Carbon and Puyallup rivers, Orting is the most at-risk area if a lahar from Mount Rainier happens. According to Cascades Volcano Observatory Scientists, a lahar would reach Orting in less than an hour. While U.S. Geological Survey predicts a lahar from Mount Rainier event could occur in the next 500 to 1,000 years, we want our students to be prepared and have the knowledge in case of an emergency.

In 2022, our district, along with other surrounding school districts, conducted a Lahar Evacuation Exercise. In 2023, new students and students in transitional grades (kindergarten, 6th and 9th grades) participated in an abbreviated lahar drill. Administration and key leaders from local organizations such as Orting Fire and Rescue and Orting Police, engaged in a tabletop discussion to design a response to a variety of lahar conditions.

# Elementary boundaries

Beginning in the 2023-24 academic year, Orting Primary School expanded its services to once again become Orting Elementary School, serving students from pre-kindergarten through 4th grade.

The following year, in 2024-25, Orting Elementary School will serve 5th grade. This change brings numerous benefits and opportunities for our children. You can see the boundary maps on our website at [www.OrtingSchools.org](http://www.OrtingSchools.org).

# Kindergarten registration

Children attending kindergarten for the first time must be 5 years old on or before September 1, 2023. Families can register online. To register, parents/guardians should provide items outlined on our website at [OrtingSchools.org/Registration](http://OrtingSchools.org/Registration).



# Nutrition Services

Our Nutrition Services Department follows all USDA guidelines to ensure students have access to nutritious breakfasts and lunches.

We offer whole grain breads, cereals, and pizza crusts with reduced fat cheeses. A salad bar and fresh fruits are offered daily at all schools. We encourage children to eat fruit and vegetables everyday.

Free and Reduced Applications are available throughout the school year and can be obtained from secretaries, cashiers, or online on our website ([OrtingSchools.org](http://OrtingSchools.org)). A new application must be returned each school year before October. Once the application is turned in and approved, it is good for the entire school year. Only one application is necessary per family. A student on Free and Reduced lunches is entitled to Free and Reduced breakfasts.



# 2023-2024 special observances

## September

National Hispanic Heritage Month  
Attendance Awareness Month  
Deaf Awareness Month  
Library Card Sign-Up Month  
10-16 National Suicide Prevention Week  
10-16 Arts in Education

## October

Filipino American History Month  
Italian American Heritage Month  
LGBT History Month  
National Disability Awareness Month  
Bullying Prevention Month  
School Principals Month  
2 National Grounds and Custodian  
Appreciation day  
6 German-American Heritage Day  
9-13 School Lunch Week  
16-20 School Bus Safety Week

## November

Native America Heritage Month  
Homeless Youth Awareness Month  
Military Family Appreciation Month  
7 Election Day  
15 Education Support Professionals Day

## December

2 Special Education Day  
4-10 Computer Science Education  
Week

## January

Poverty Awareness Month  
National Thank You Month  
School Board Appreciation Month

## February

Black History Month  
Luna New Year  
Career and Technical Education  
(CTE) Month  
5-9 School Counseling Week  
23 School Bus Driver Appreciation  
Day

## March

Irish-American Heritage Month  
Women's History Month  
Music in Our Schools Month  
11-15 Education Support  
Professionals Week

## April

Arab American Heritage Month  
Autism Awareness/Acceptance  
Month  
Month of the Military Child  
National Volunteer Month  
Poetry Month  
School Library Month  
7-13 School Library Week  
22-26 Public School Volunteer Week  
24 Administrative Professionals Day

## May

Asian Pacific Islander American  
Heritage Month  
Jewish American Heritage Month  
Haitian Heritage Month  
Mental Health Awareness Month  
National Physical Fitness and Sports  
Month  
3 School Lunch Hero Day  
6-10 Teacher Appreciation Week  
8 School Nurse Day

## June

National Caribbean American  
Heritage Month  
LGBTQIA+ Pride Month

## Stay in the loop

Emergency closure or other  
circumstances could cause  
calendar changes, including  
extending the school year.



*Visit our website for the most  
up-to-date calendar dates and  
find out more information  
about our cultural calendar.*